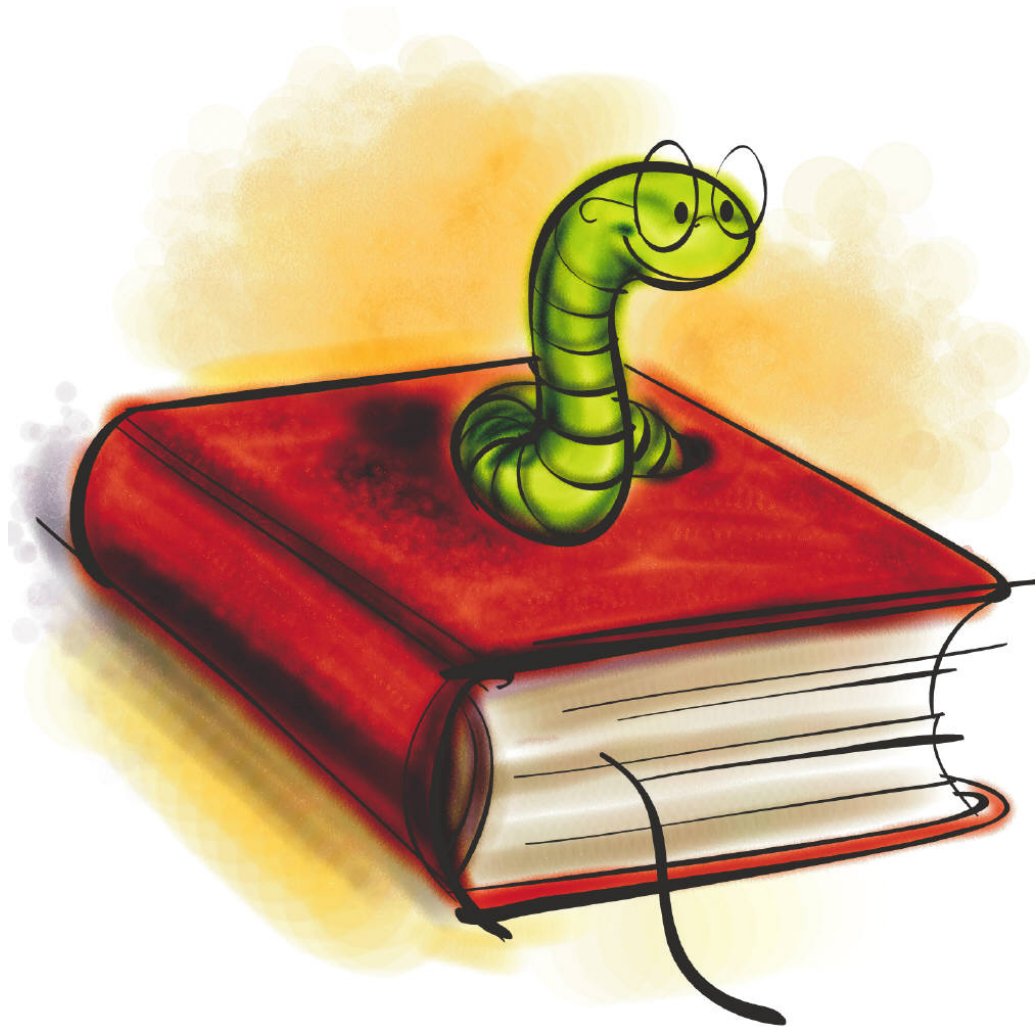


ISAT READING

2006-2007





TEST SESSIONS

Session 1

:6 Short Passages (Literary,
Informational, Poems)

:30 Multiple Choice Questions

:SAT 10 (Norm-referenced Questions)

TEST SESSIONS

SESSIONS 2 & 3

One of the sessions will have this

format: 1 Short Informational Passage

(4 Multiple Choice Questions)

1 Longer Literary Passage

(16 Multiple Choice Questions,

1 Extended Response)

Criterion-referenced Questions



TEST SESSIONS

**The other session
will have this
format:**

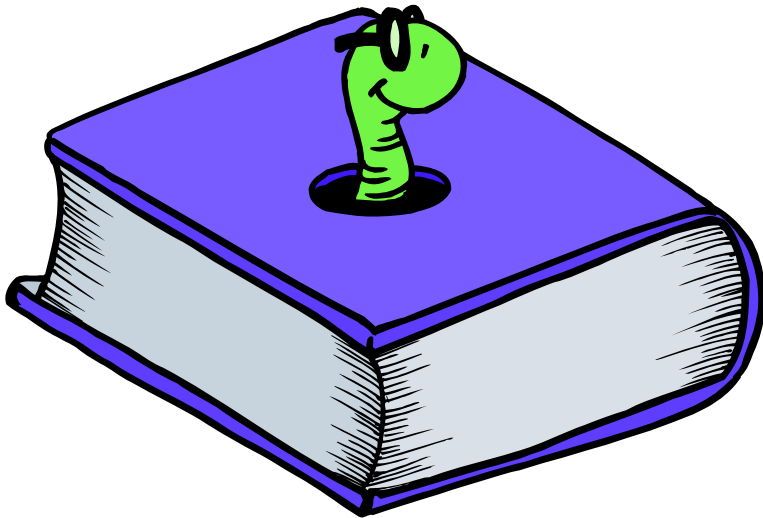
**2 Passages of more equal
length;**

**10 multiple choice questions
each; 1 extended response**

**One of these sessions will be a
pilot.**



IMPROVEMENTS



- Passages Reordered
- Additional lined page for the Extended Response
- Lexile Scores

FRAMEWORKS



Test questions are written by Illinois teachers to align to Framework Objectives.

????Framework Issues????

- Homonyms
- Fable/folk tale/legend/myth/fairy tale/essay
- Organizational patterns
- Mood and tone
- Point of view
- Irony
- Genre



More Frameworks



main idea

Information in charts/graphs

inference

elements of fiction

author's message

point of view

genre

type of writing

character

cause/effect

fact/opinion



Extended Response

KEY IDEAS

TEXT REFERENCES

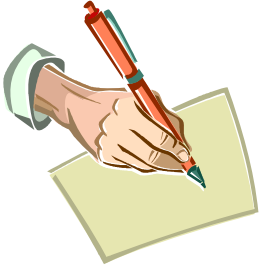
**CONNECTIONS/
CONCLUSIONS**

EXTEND

BALANCE



ER Writing Guidelines

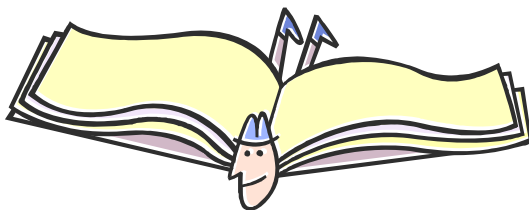


- Elicit more than one response
- Question contains all the information the student needs
- Keep the question reasonable
- Consult the rubric
- Material from story must justify a personal response
- Use action verbs



CONTACT INFORMATION

Judie Steinhauser



justeinh@isbe.net

217/782-4823

